

WICI Symposium 2012



Sustainability

Management of SUSTAINABILITY (MOS) by Mitsubishi Chemical Holdings



Health

October 31, 2012

Mitsubishi Chemical Holdings Corporation
Corporate Strategy Office



Comfort

Mitsubishi Chemical Holdings (MCHC) Group Organization

Mitsubishi Chemical Holdings Corporation (MCHC)*

Consolidated net sales:
 ¥3,208.2 billion
 Group employees: 53,979



Performance Products



Health Care



Industrial Materials

* Listed

Figures for consolidated net sales and paid-in capital are for the year ended March 2012.



100%

The KAITEKI Institute, Inc.



100%

Mitsubishi Chemical Holdings America, Inc.



100%

Mitsubishi Chemical Holdings (Beijing) Co., Ltd.

2012.6.1~



100%

MCFA Inc. (Financing & accounting for the Group)



100%



Mitsubishi Chemical Corporation (MCC)

Paid-in capital: ¥50.0 billion
 Consolidated net sales:
 ¥2,080.9 billion
 Group employees: 27,689

[Line of businesses]
 Performance products
 Healthcare
 Industrial materials etc.



56.3%



Mitsubishi Tanabe Pharma Corporation* (MTPC)

Paid-in capital: ¥50.0 billion
 Consolidated net sales:
 ¥407.2 billion
 Group employees: 9,139

[Line of businesses]
 Pharmaceuticals etc.



100%



Mitsubishi Plastics, Inc. (MPI)

Paid-in capital: ¥21.5 billion
 Consolidated net sales:
 ¥379.0 billion
 Group employees: 8,869

[Line of businesses]
 Plastics products
 Inorganic fiber materials etc.



100%



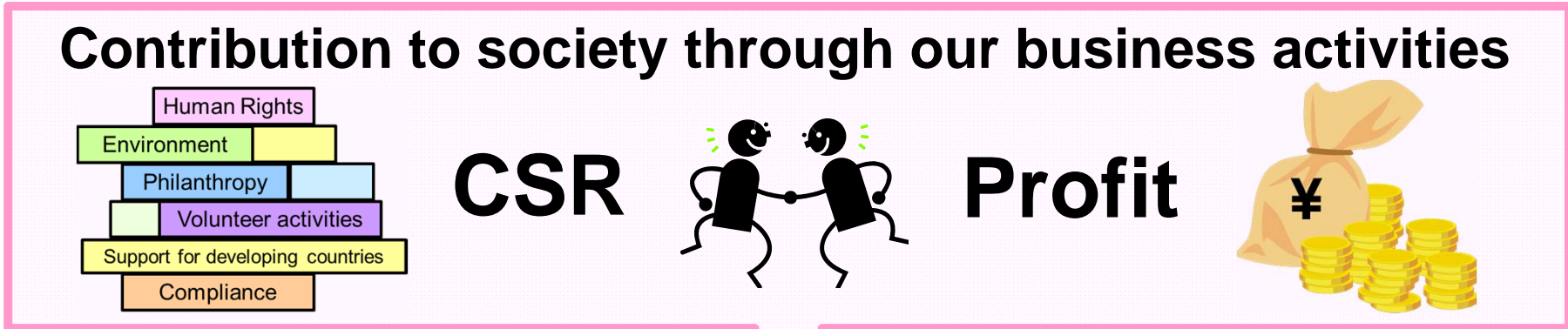
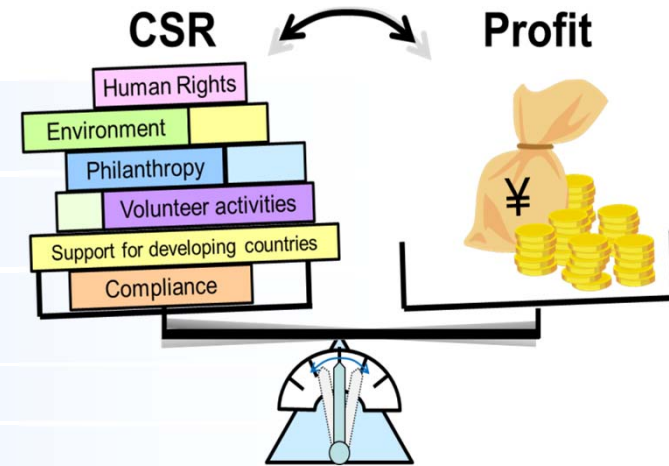
Mitsubishi Rayon Co., Ltd. (MRC)

Paid-in capital: ¥53.2 billion
 Consolidated net sales:
 ¥474.0 billion
 Group employees: 8,174

[Line of businesses]
 Chemicals & plastics
 Carbon fiber
 & composite materials
 Water treatment etc.

MCHC's Social Responsibilities

- 1972 The Limits to Growth (Club of Rome)
- 1972 United Nations Conference on the Human Environment
- 1987 World Commission on Environment and Development (Brundtland Commission)
- 1992 United Nations Conference on Environment and Development (Rio Declaration)
- 1997 United Nations Framework Convention on Climate Change (Kyoto Protocol)
- 2002 World Summit on Sustainable Development
- 2010 Launch of ISO26000



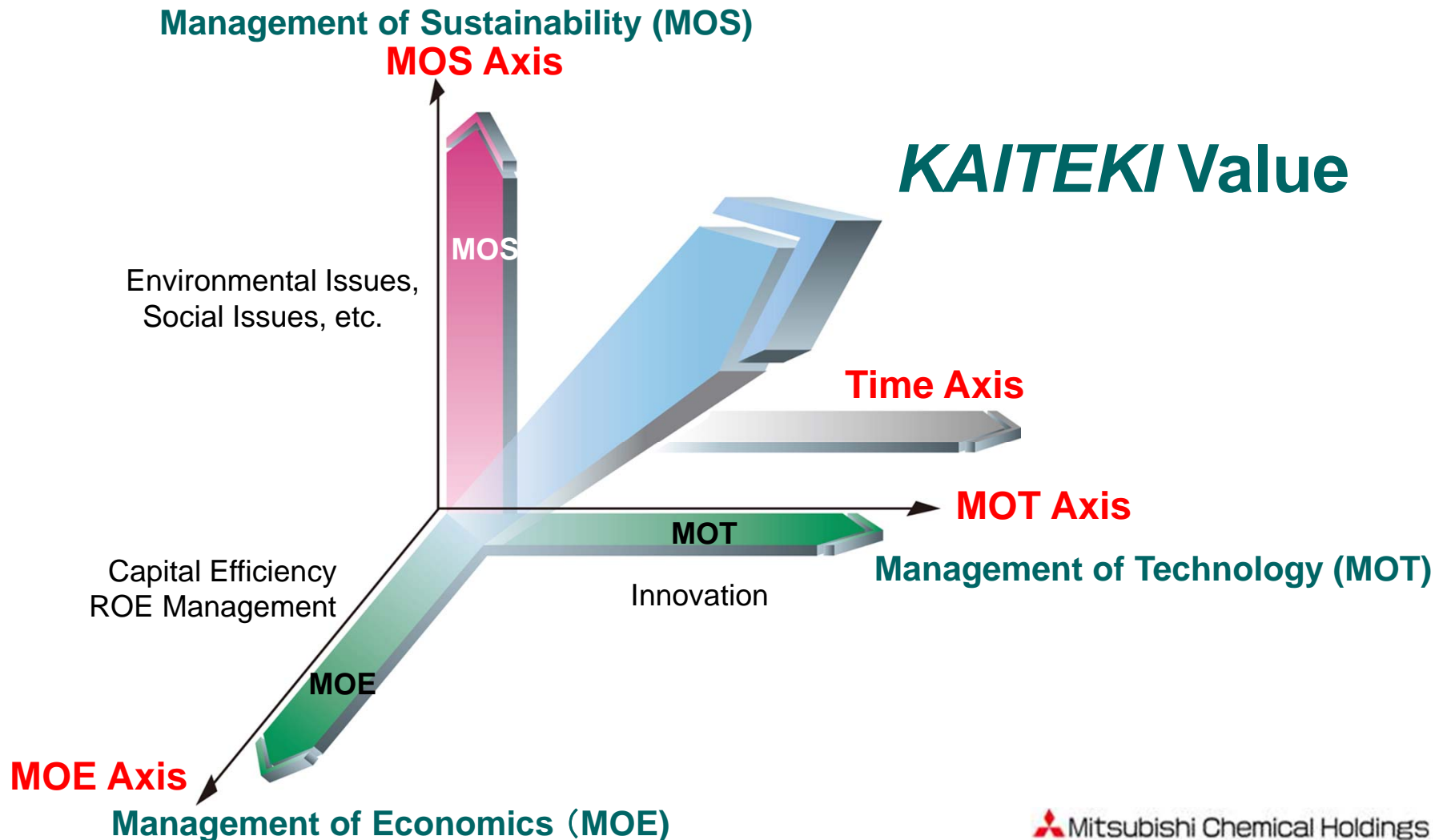
MOS

(Management of SUSTAINABILITY)



Promotion of *KAITEKI* Management

We promote *KAITEKI* management through a new axis of Management of SUSTAINABILITY (MOS) with existing axes of MOE & MOT



MOS Indexes Monitoring MOS Value

MOS Indexes

Sustainability Index

S-1 Contribute to reducing environmental impact through products & services

S-2 Practice energy saving & reduction of depletion resources

S-3 Contribute to reducing environmental impact through supply chain management

Health Index

H-1 Contribute to medical treatment

H-2 Contribute to improvements of QOL

H-3 Contribute to early detection and prevention of diseases

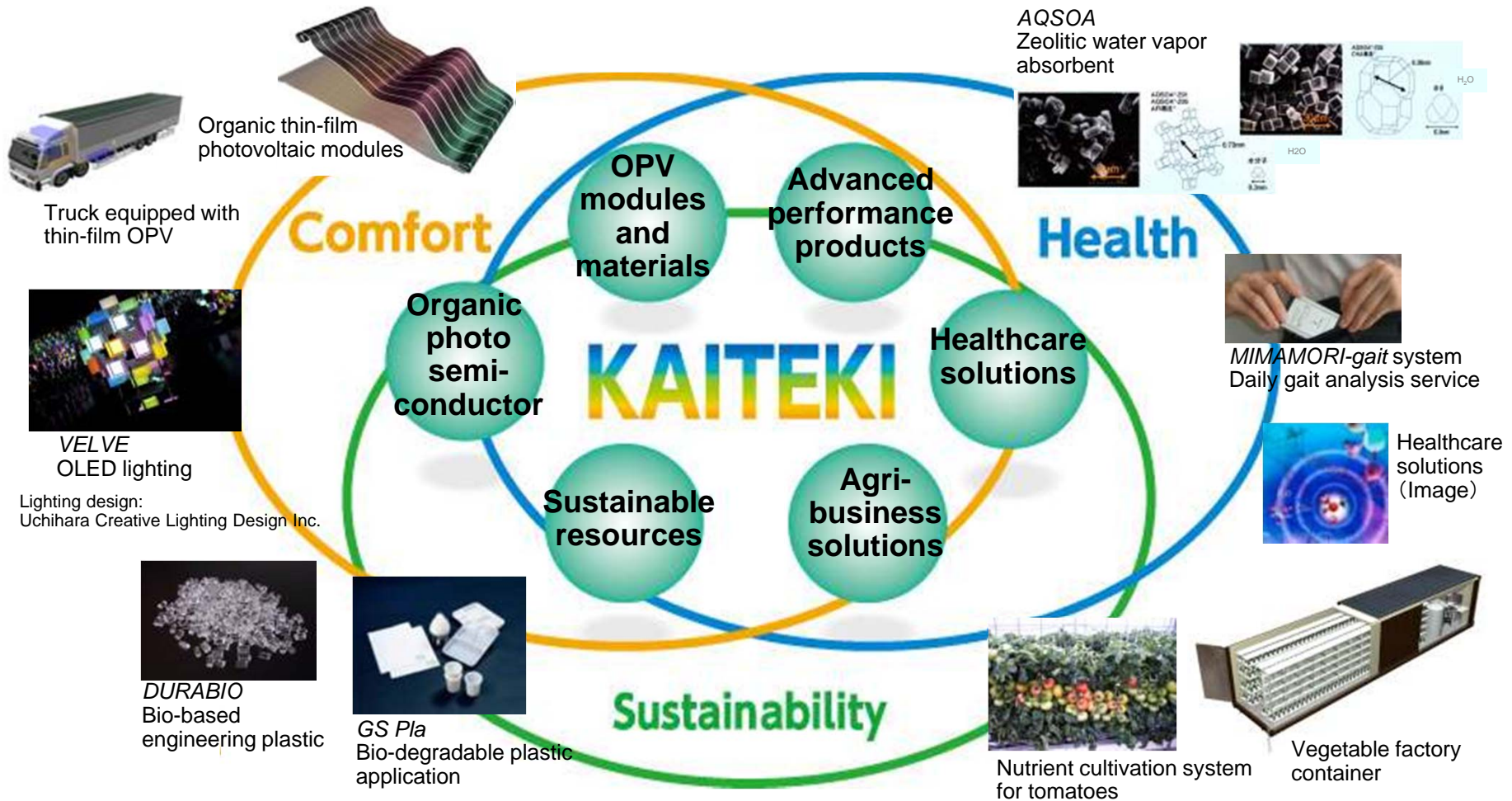
Comfort Index

C-1 Deliver products (development and manufacturing) for comfortable lifestyle

C-2 Improve stakeholder satisfaction

C-3 Earn Recognition of corporate trust

Next-Generation Growth Businesses for **KAITEKI**



These businesses contribute to Sustainability, Health, and Comfort by drawing on the Group's core technologies, and we are committed to their rapid commercialization as the drivers of our innovation strategy.

Trend in MOS Results

MOS Indexes quantified and monitoring began in FY2011

